

Sofas

Swing



Modern, linear and comfortable modular sofa system. The rigorous shape of the shell is softened by the goose down mats used as seat and backrest and those resting on the armrests.

SWING: SOFA WITH GOOSE-DOWN CUSHIONS

The large goose down cushions, almost like mattresses lying on the important base and supported by polished cast metal feet, give Swing a refined and elegant appearance. They are properly quilted, to maintain shape, and then rested on the shell, which is constructed of solid fir and plywood structural parts, and then upholstered.



SWING: SECTIONAL SOFA

The extensive modularity of the Swing sofa system consists of a two-seater, two-and-a-half-seater or three-seater sofa, side modules with the same division, corner element, island or sundial, matching square ottoman and decorative cushions.



FINISHES

Discover now the finishes available to furnish your home with the Swing sofa in fabric, leather or eco-leather.

Fabrics

BASIC

X370



3



4



9



10



23



29

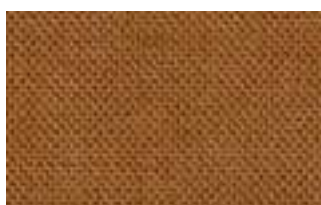


32

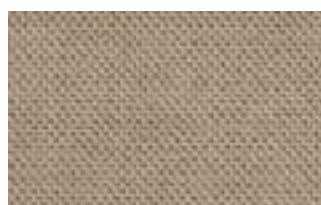
Relax



5



20



25



53



62



66



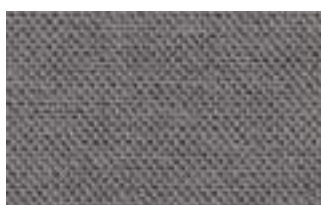
74



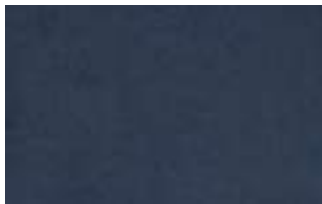
81



96



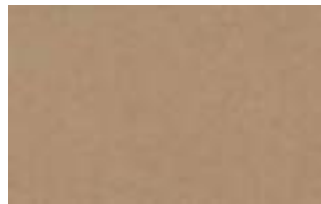
103



15



19



21



22



34



46



49



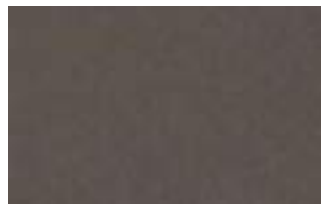
50



76



88



561

START

Scoop



6



7



9



25



31



59



104



561

Stropiccio



4



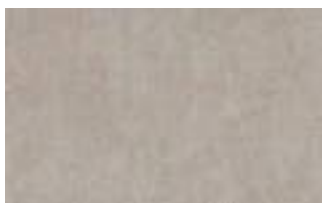
6



8



17



19



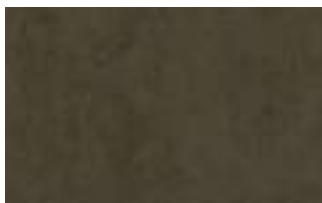
20



22

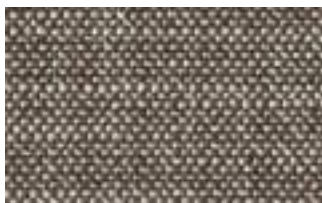


23



30

Nodone



1302



1307



1308



1309



1310



1311



1313



1314

R Flair



P321-6200-039



P321-6200-901



P321-6300-419



P321-6300-503



P321-6300-988



P321-6300-996

EXTRA

Anice



1



2



3



4



5



6



7



8



9

Lovely



6



10



19



22



27



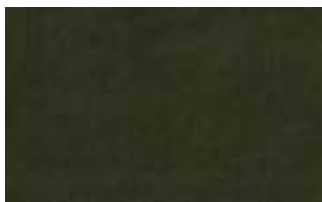
31



36



102



113



200



202

Cosme



e200



e202



e205



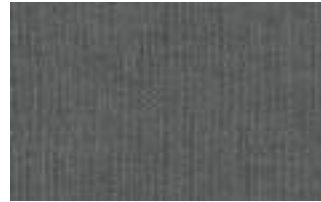
e206



e209



e220



e232



e234



e236



e240



e241



e244

Soda



29



30



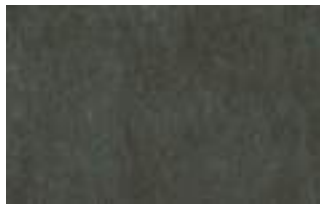
39



41



56



62



74



104

LIGHT

Lima



2



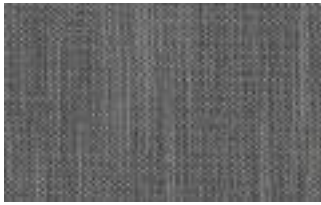
5



10



12



14



16



23



29



31



43

Mimi



A3004



A3005



A3006



A3014



A3018



A3023

Memphis



1



6



10



11



13



14



15



16

SUPER

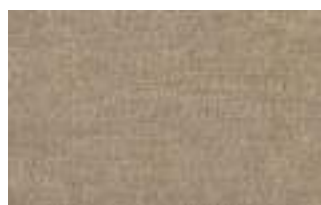
Hylemt



25



102



109



117



121

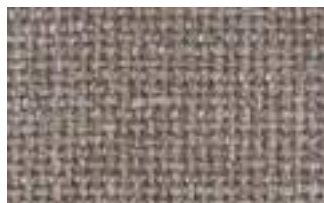


204



207

Axum



3



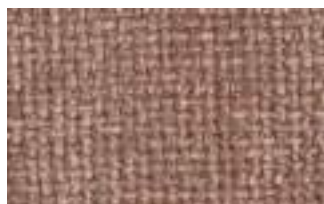
11



12



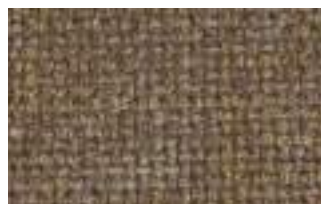
18



21



23



29

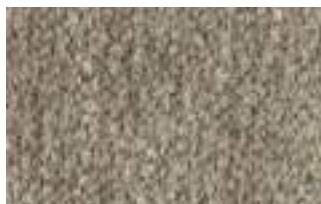


30

Barnum Unito



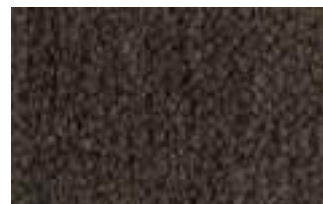
1 bianco



2 corda



9 bosco



10 piombo



13 lavagna



23 bruciato



24 lana

Leathers

K LEATHERS

Leather



200



202



204



206



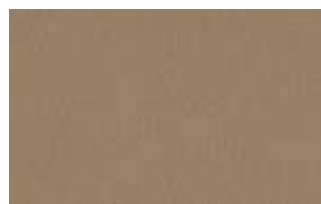
207



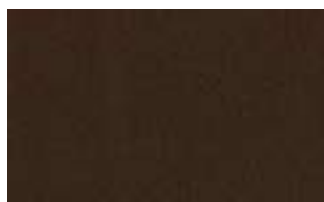
208



211



214



217



224



228



234



274



298



301

W LEATHERS

Nabuk



Creta



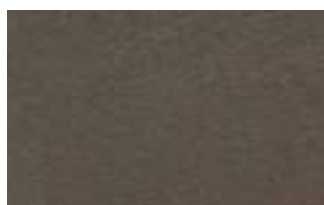
Camel



marrone



Testa di moro



Seppia



Black



Hard leather

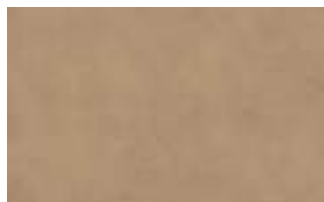


Grigio

Ecoleathers

EXTRA ECO-LEATHERS

Vintage eco-leather



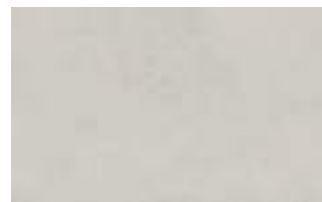
2



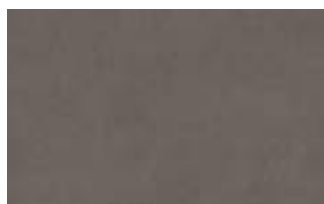
3



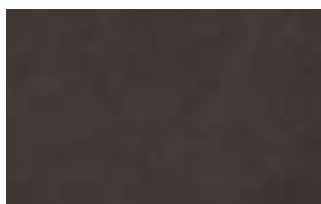
4



6



7



8



9



14



19



22